

A NEW CHAPTER AT BETH DAVID



REVITALIZED OUTDOOR SPACE

OPERATING PLANS AND
FUNDRAISING APPEAL



BETH DAVID
REFORM CONGREGATION

Seek. Learn. Do.



BETH DAVID

REFORM CONGREGATION

Seek. Learn. Do.

Dear Fellow Congregants,

January 2025

I write to you with great enthusiasm as we formally announce our operating plans for revitalizing Beth David's outdoor space.

In many respects, it has never been a more exciting time to be a member of Beth David. We have an incredibly dynamic team of clergy, educators and staff, and the distinct warm and welcoming nature of our congregation is pervasive. At a time when many no longer see the benefit of affiliating with a synagogue, we are a congregation some 300 member units strong, with nearly 20 new members joining in 2024 alone. Our religious school has 101 enrollees this year - a greater than 10% year-over-year increase and the first time in years we've hit the "triple digit mark". Additionally, we have approximately 20 teens enrolled in our Madrichol and confirmation programs. For the younger set, our Beth David Boogies, Tot Shabbats, and Camp Harmony summer program all attract potential congregants.

Yet with all that positive momentum, we still must deal with a fundamental conundrum: because of current zoning regulations, we are unable to utilize our campus for many of the activities that typically create supplemental income for a synagogue. Accordingly, as compared with our peers we are disproportionately reliant on membership dues, and therefore membership numbers, to meet our operating budget. And our efforts towards forming a preschool - which will provide Jewish values-based early child education for our community, as well as supplement income and create a pathway for prospective new member families - are currently delayed. We remain optimistic that the preschool will happen, but both before and after it does, we still need avenues to differentiate Beth David further from the available alternatives.

The revitalized outdoor space is intended both to build on the momentum we have, and to meet the challenges we face. It will be a tangible, differentiating factor for potential congregants. It will be a space with play areas for our young and young-at-heart; provide room to meditate and pray; and offer areas to bond and explore together across multiple generations. In short, this space will enhance all that makes Beth David what it is.

To date we have raised over \$156,000 for this outdoor space. \$50,000 of those funds were allocated by the Board of Trustees from the Campaign for Beth David, and the remainder has come from a small group of seed donors who believe deeply in this project and others based on targeted solicitations. We need to raise \$95,000 more to make this project a reality, and we are appealing to the Congregation to complete this funding.

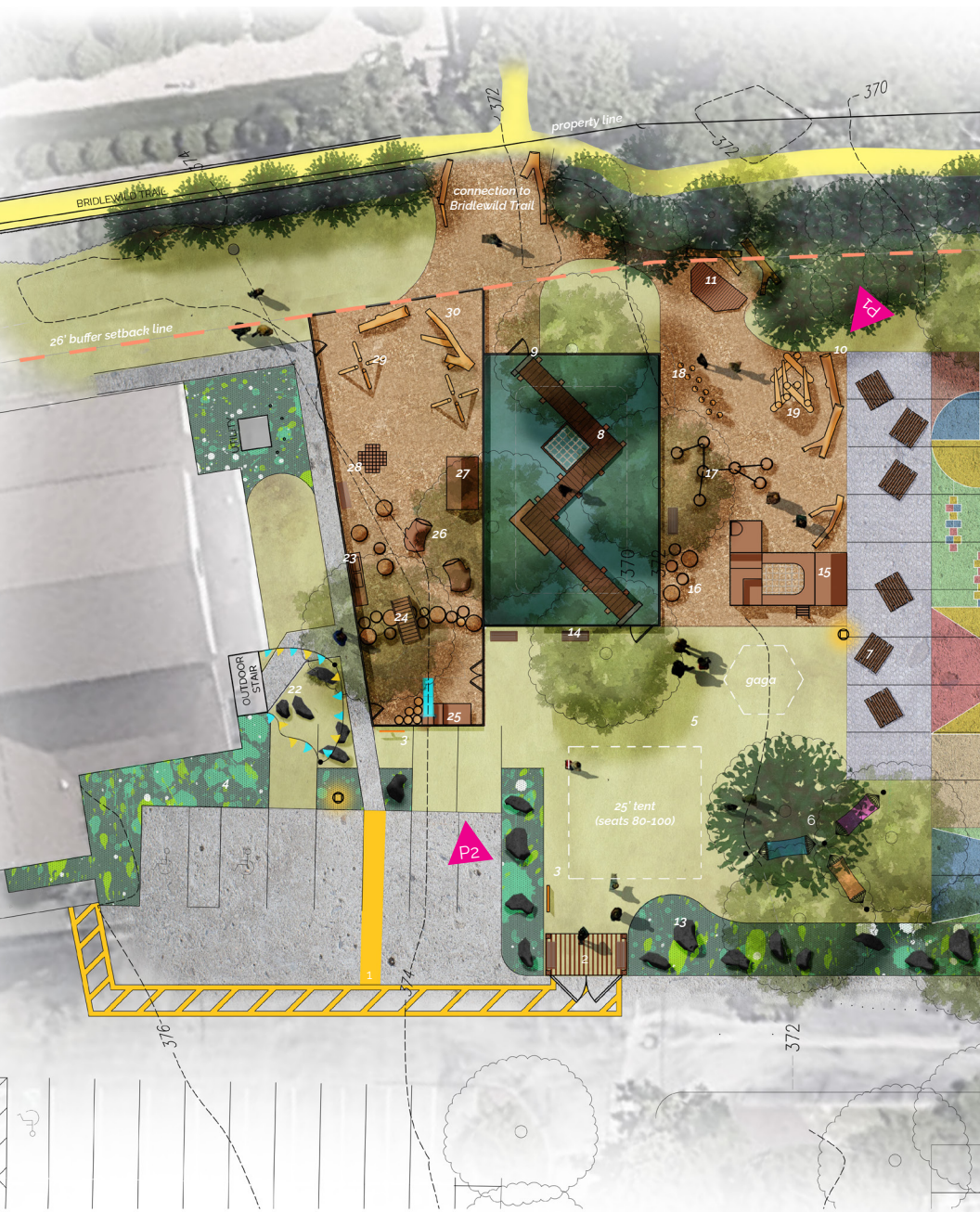
Enclosed is a detailed overview of what this revitalized outdoor space entails. All donations, no matter the size or kind, are welcome, and naming opportunities – which will be recognized in a permanent display in the new outdoor space – are included on page 7 of this mailing. There will also be ample opportunities to volunteer your time and effort on various aspects of the project.

Thank you in advance for your participation in this project. We look forward to sharing this space with you soon and knowing it will be there for the generations to come – L'dor V'dor!

L'Shalom,

Eric Klinger-Wilensky,
on behalf of the Board of Trustees





This design is based on the campus master plan created by SALT Design Studio.



LEGEND

Overall Site Improvements

1. Pedestrian striping in parking lot
2. Entry pavilion with gates
3. Signage
4. Pollinator gardens
5. Open lawn
6. Hammock grove
7. Moveable picnic tables
8. Boardwalk with netting and seating
9. New gates in basin fence
10. Rustic log benches
11. Stage
12. Removable bollards
13. Boulders throughout pollinator garden
14. Benches

K-8 Play

15. Large play fort and storage cubby
16. Stump steppers
17. Balance beams
18. Timber stilt steppers
19. Timber climbing structure
20. Pyramid play structure
21. Play mural and basketball court
22. Cove under staircase

Pre-K Play

23. Fenced playground
24. Footbridge over stumps
25. Slide and play kitchen
26. Log tunnels and stump play
27. Storage shed
28. Modular building blocks
29. Teepee grove
30. Log balance play

total preschool area
~2150 sq ft



perspective viewpoint

HOW YOU CAN HELP



The following page lists naming opportunities as well as instructions for making your gift. Anticipating the Congregation's generosity in addition to funds which have already been raised, we are committed to breaking ground on this ambitious and inspiring project in Spring of 2025.

If you would like further detail on the project budget or have other questions about our plans, please contact Eric at eswilensky@gmail.com or 302-230-6117.

Thank you for your support.



[for illustration purposes only]

NAMING OPPORTUNITIES

Item	Number	Individual	Total Cost	Sponsored
		Donation		
Large Fort	1	\$40,000	\$40,000	✓
Board Walk with Netting	1	\$25,000	\$25,000	✓
Storage Shed	1	\$10,000	\$10,000	
Entry Pavillion & Gates	1	\$8,000	\$8,000	
Play Kitchen	1	\$6,000	\$6,000	
Footbridge	1	\$6,000	\$6,000	
Hidden Cove Under Staircase	1	\$5,000	\$5,000	
Slide	1	\$4,000	\$4,000	
Teepees	2	\$4,000	\$8,000	
Timber Stilt Steppers	2	\$3,500	\$7,000	
Basketball Net and Court	1	\$3,000	\$3,000	
Pollinator Garden	1	\$2,500	\$2,500	
Log Tunnels	2	\$2,500	\$5,000	
Modular Building Blocks	2	\$2,500	\$5,000	
Stump Play	4	\$1,000	\$4,000	
Hammocks	3	\$1,000	\$3,000	
Rustic Log Benches	6	\$600	\$3,600	
General Sponsor - Leaf Level		\$180		
General Sponsor - Root Level		\$360		

Total remaining to be raised

\$95,000

DONATION LINK

Funds may be donated by scanning the QR code to the right. That code will take you to the following web address, which you can also type in directly to your browser:

<https://bdavid.shulcloud.com/payment.php>.

Once you are at this page, we recommend logging in to your Shul Cloud account so we can more efficiently link your donation to you. Under TYPE, select "Challenge Funds-Landscaping Project" from the drop-down menu.

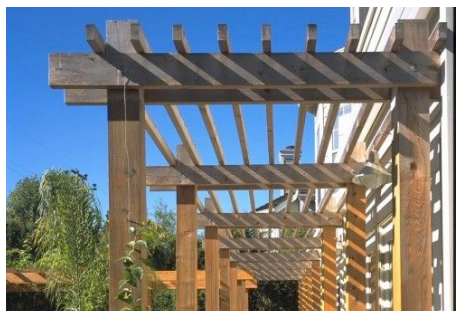
Alternatively, you may mail a check directly to Beth David using the self-addressed enclosed envelope. Please write "Challenge Funds – Landscaping Project" in the memo line of any check.



SCAN ME

PROJECT COMPONENTS

ENTRY GATEWAY



The "front door" to our new outdoor space, and first impression of the entire campus.

HAMMOCK GROVE



A particularly meaningful aspect for Rabbi Kalisch, a place to rest, refresh and reflect.

BOARDWALK OVER STORMWATER BASIN WITH NET SEATING



A central component of the operating plans, and an effort truly to connect with nature.

OPEN LAWN



The heart of the new outdoor space, a revitalized lawn to serve as a hub for prayer and community activities.

PLAY MURAL AND BALL COURT



Calling all artists, a perfect opportunity for an in-kind donation of time. Please consider helping us make our street games area more welcoming.

POLLINATOR GARDENS



Do you have a green thumb? Help us plant our pollinator gardens, which will enhance the natural backdrop for our open space.

LOG TUNNEL AND STUMP PLAY



A key component for our Pre-K space, and an occasion to sponsor the basis for the earliest memories of our future congregants!

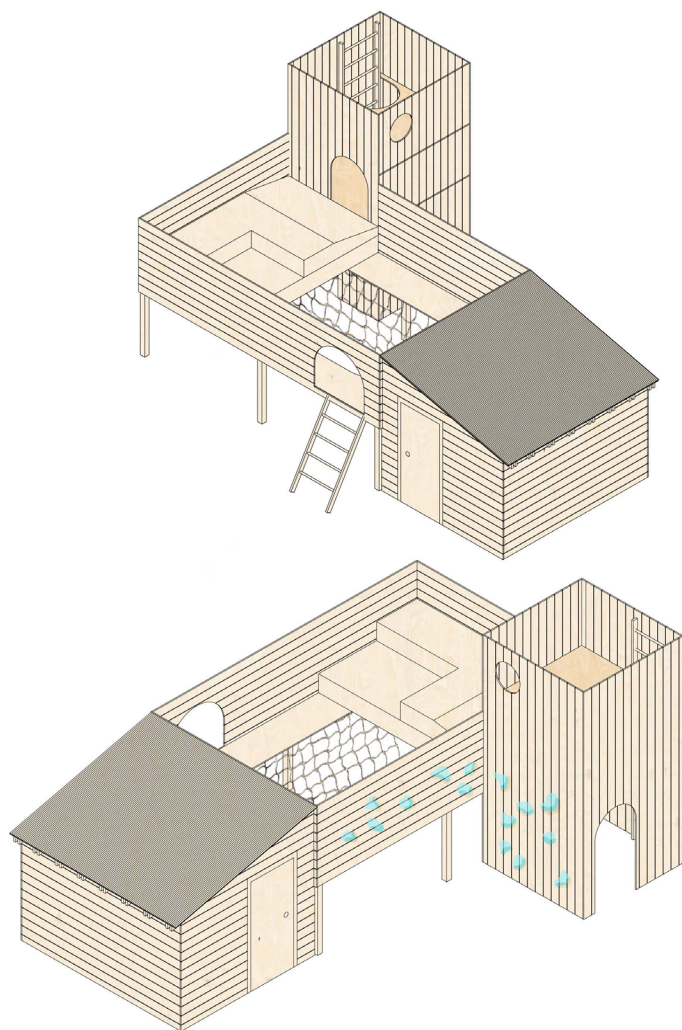
TEEPEE GROVE AND PLAY KITCHEN



Another opportunity to sponsor an activity for our preschool crowd will be two sets of teepees for our “teepee grove” and a play kitchen.

PROJECT COMPONENTS

LARGE PLAY FORT AND STORAGE CUBBY



The *pièce de résistance* of our K-8 space, the large fort will, we hope, be a central feature of our outdoor space, and key to memories of generations of children.

THANK YOU



BETH DAVID
REFORM CONGREGATION

Seek. Learn. Do.